

TPM CIRCLE NO :-04	ACTIVITY	KK	QM	PM	JH	SHE	OT	DM	E&T
TPM CIRCLE NAME : Oil pump	LOSS NO. / STEP								
DEPT : Machine Shop	RESULT AREA	P	Q	DEF:-A	C	D	S	M	

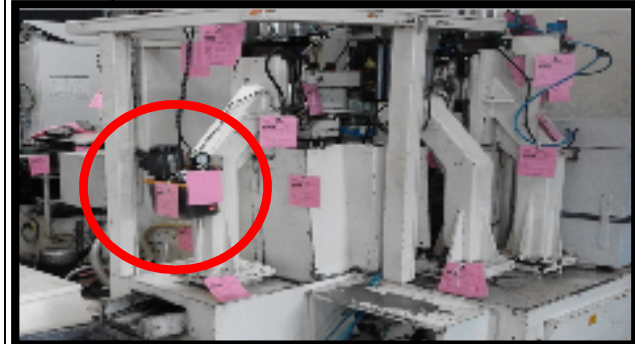
CELL :- A 247	CELL NAME: Bracket	MACHINE / STAGE :- SPM A1 &A2	OPERATION- JH
---------------	--------------------	-------------------------------	---------------

KAIZEN THEME :- To Easier JH Activity

IDEA :- Lubrication Tank Location Change.

WIDELY/DEEPLY:-

PROBLEM / PRESENT STATUS :- During JH activity Lubrication Oil Level Checking is very difficult.



COUNTERMEASURE:- Lubrication Tank Move On Front Side.

AFTER



- WHY - WHY ANALYSIS :-**
- Why 1 :-** Lubrication Oil Level Checking is very difficult
 - Why 2 :-** Operator Need to Go at Back Side of Machine & Checking oil level.
 - Why 3 :-** Lubrication Tank Mounted on Back Side of Machine.
 - Why 4 :-** Basic Design of Machine.

RESULT :-
1)Easy for Checking Lubrication Oil Level.

ROOT CAUSE :- Lubrication Tank Mounted on Back Side of Machine.

REGISTRATION NO. & DATE:- 22.07.2015

REGISTERED BY :- Nana Ugale

MANAGER'S SIGN :- Surendra Kulkarni.

BENCHMARK	Difficult to Check
TARGET	Easy to Check
KAIZEN START	20.07.15
KAIZEN FINISH	22.07.15

TEAM MEMBERS :- Nana Ugale
Amol Kokate.

BENEFITS :- JH Activity Time Reduced.

KAIZEN SUSTENANCE

WHAT TO DO : N.A

HOW TO DO : N.A

SCOPE & PLAN FOR HORIZONTAL DEPLOYMENT

SR. NO.	CELL	TARGET	RESPONSIBILITY	STATUS
	B1&B2	15.10.15	Nana Ugale	Inprocess